



两种出线方式
Two connection outlets



型号 Type		AIR7-920
轴数 Axes		6
负载 Payload		7kg
机器人本体 Manipulator	重量 Weight	53kg
	最大运动范围 Reach	920mm
定位精度 Positioning accuracy	位置重复定位精度 Position repeatability	±0.02mm
IP 等级 Ingress Protection		IP67
安装方式 Mounting		地装 / 壁装 / 吊装 Floor/ wall/ ceiling
运动范围 Working range	轴 1* Axis 1 rotation	-170°/+170°
	轴 2 Axis 2 arm	-100°/+135°
	轴 3 Axis 3 arm	-120°/+156°
	轴 4 Axis 4 wrist	-200°/+200°
	轴 5 Axis 5 bend	-135°/+135°
	轴 6 Axis 6 turn	-360°/+360°
运动速度 Rotation rate	轴 1 Axis 1 rotation	380°/s
	轴 2 Axis 2 arm	320°/s
	轴 3 Axis 3 arm	390°/s
	轴 4 Axis 4 wrist	490°/s
	轴 5 Axis 5 bend	565°/s
	轴 6 Axis 6 turn	815°/s
适用控制柜 Controllers		inCube20
安装条件 Mounting conditions	环境温度: 0~45℃ Ambient temperature: 0~45℃ 湿度: 恒温下 95% 以内, 无凝露。 Humidity: not more than 95% at constant temperature without condensation. 允许高度: 操作机正常工作环境的海拔高度不应超过 1000 米 (在 1000 米 -4000 米高度范围内, 操作机应降额使用)。 Allowable altitude: not more than 1000m above sea level. 不应有腐蚀性、可燃性、易爆性气体。 No corrosive, flammable or explosive gases.	

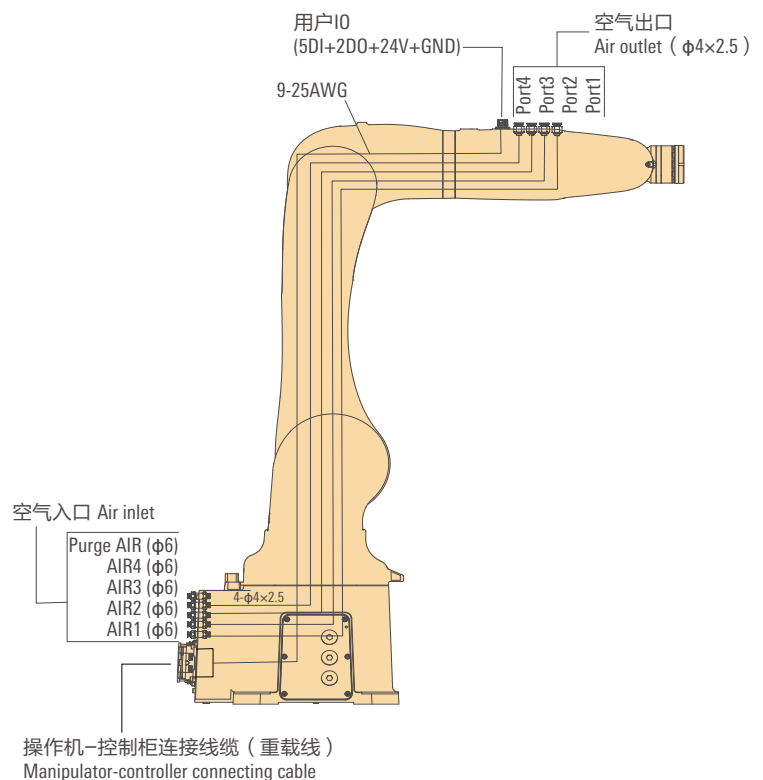
AIR7-920

高速度
高精度
更大负载
加长臂展
高防护等级

High speed
High precision
Larger payload
Longer arm
IP67

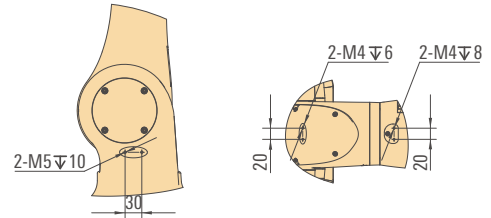
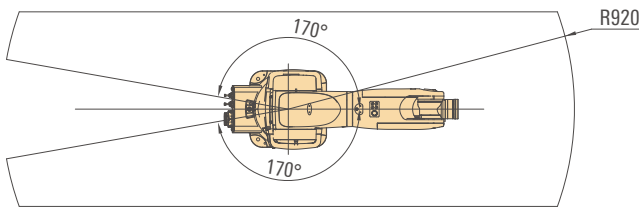
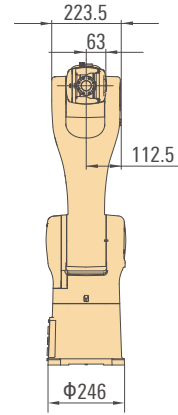
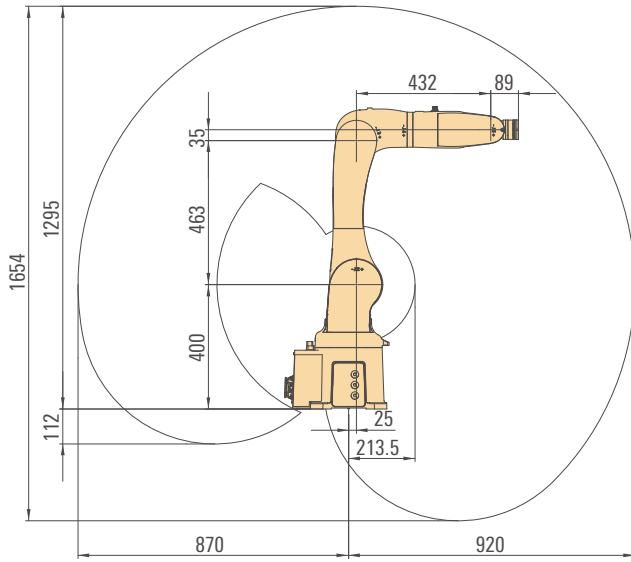
- 作业灵活快速, 负载 7kg, 臂展长达 920mm, 可覆盖更多应用场景。
With 7kg payload and 920mm reach, AIR7-920 can realize flexible and fast operation. Multiple application scenarios can be covered.
- 尤其适用于 3C 领域中的多工位作业, 如上下料、搬运码垛、打磨抛光等, 以及智能仓储领域分拣码垛。
AIR7-920 is especially suitable for multi-station operation in 3C field, such as loading & unloading, handling, palletizing, grinding and polishing, as well as sorting and palletizing in intelligent storage field.
- 在布满灰尘或有水流冲射的环境下依然能够稳定运行。
AIR7-920 can keep high performance under the harsh environment full of dust or water.

机体内配线 • 配管 Integrated dressing

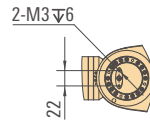


* 若去除机械限位, 运动范围可达 -180°/+180°。
If the mechanical limit is removed, the working range can reach -180°/+180°.

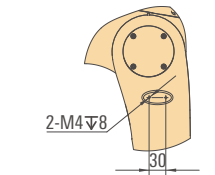
外形尺寸及运动范围 Outline dimension and Working range



大臂孔位图
Lower arm

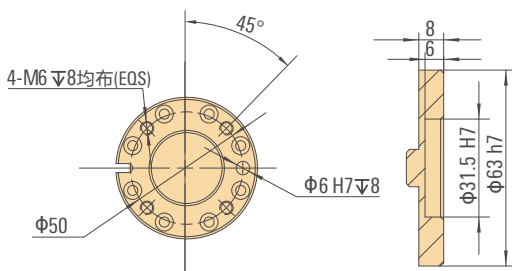


腕部孔位图
Wrist arm



肘部孔位图
Elbow arm

法兰图 Flange drawing



底座安装图 Base installation drawing

