



AIR50-2230

高速度	High speed
高精度	High precision
高稳定性	High stability
高刚性的轻盈机身	High rigidity, lightweight body
腕部 IP67	Wrist IP67

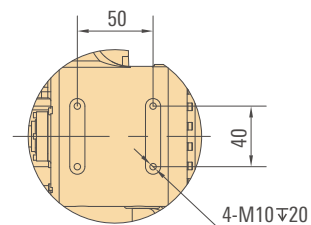
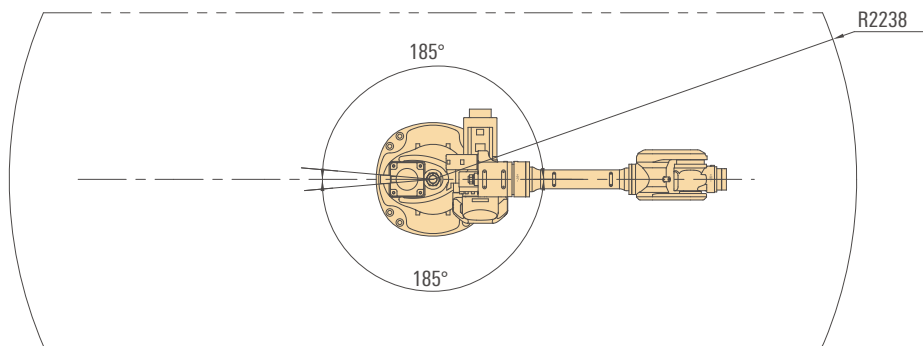
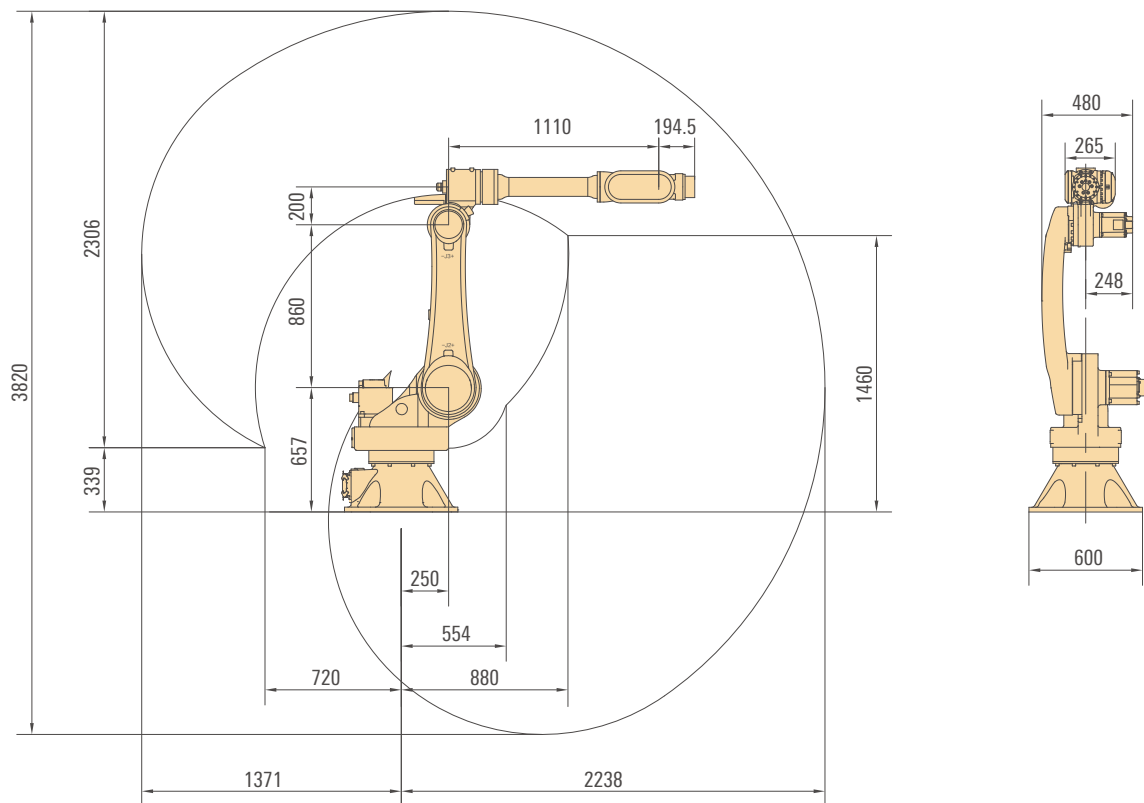
- 结构可靠稳定, 优化的整体设计, 使零部件磨损率降低, 寿命延长。
Reliable and stable structure, as well as superior overall design, reduces parts wear rate and extends the service life.
- 主要用于搬运、码垛、上下料、去毛刺、切割等作业。
AIR50-2230 is mainly used in handling, palletizing, loading & unloading, deburring, cutting, etc.

型号 Type		AIR50-2230
轴数 Axes		6
负载 Payload		50kg
机器人本体 Manipulator	重量 Weight	550kg
	最大运动范围 Reach	2238mm
定位精度 Positioning accuracy	位置重复定位精度 Position repeatability	±0.06mm
IP 等级 Ingress Protection		IP54 (腕部: IP67) IP54 (Wrist: IP67)
安装方式 Mounting		地装 Floor
运动范围 Working range	轴 1* Axis 1 rotation	-185°/+185°
	轴 2 Axis 2 arm	-75°/+145°
	轴 3 Axis 3 arm	-120°/+170°
	轴 4 Axis 4 wrist	-350°/+350°
	轴 5 Axis 5 bend	-120°/+120°
	轴 6 Axis 6 turn	-360°/+360°
运动速度 Rotation rate	轴 1 Axis 1 rotation	180°/s
	轴 2 Axis 2 arm	180°/s
	轴 3 Axis 3 arm	180°/s
	轴 4 Axis 4 wrist	260°/s
	轴 5 Axis 5 bend	255°/s
	轴 6 Axis 6 turn	370°/s
适用控制柜 Controllers		ARC4-50
安装条件 Mounting conditions	环境温度: 0~45℃ Ambient temperature: 0~45℃ 湿度: 恒温下 95% 以内, 无凝露。 Humidity: not more than 95% at constant temperature without condensation. 允许高度: 操作机正常工作环境的海拔高度不应超过 1000 米 (在 1000 米-4000 米高度范围内, 操作机应降额使用)。 Allowable altitude: not more than 1000m above sea level. 不应有腐蚀性、可燃性、易爆性气体。 No corrosive, flammable or explosive gases.	



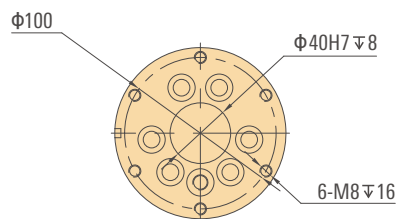
* 若去除机械限位, 运动范围可达 -180°/+180°。
If the mechanical limit is removed, the working range can reach -180°/+180°.

外形尺寸及运动范围 Outline dimension and Working range



肘部孔位图
Elbow arm

法兰图 Flange drawing



底座安装图 Base installation drawing

